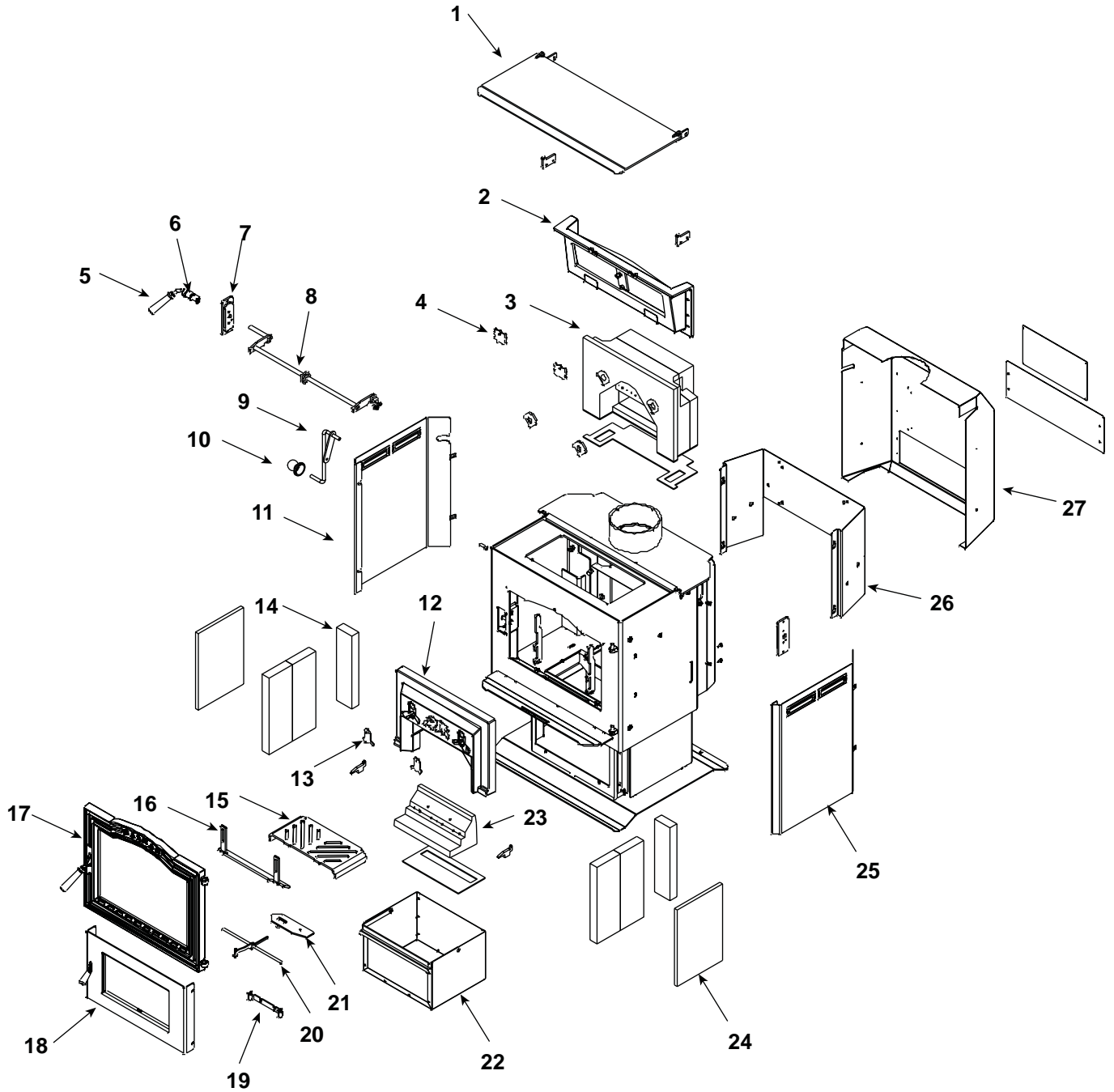


1-90-856000-1 Black W/Pedestal



Part number list on following page.

IMPORTANT: THIS IS DATED INFORMATION. Parts must be ordered from a dealer or distributor. **Hearth and Home Technologies does not sell directly to consumers.** Provide model number and serial number when requesting service parts from your dealer or distributor.



Stocked
at Depot

ITEM	DESCRIPTION	COMMENTS	PART NUMBER	
1	Top load door, painted w/gasket & hdwr	Pre 008840369	1-10-856509A	
		Post 008840369	1-10-856009A	Y
	Bottom Hinge	Set of 2	1-00-856084	
	Hinge spacer	Qty 2 req	2-00-40021L	
	Top load door gasket	5 ft	1-00-10050	Y
	Wood Handle, Pkg of 3	Pre 008840369	3-40-08746-3	
2	Damper frame asy with damper		1-10-250109A	Y
	Damper adjuster with hardware		1-00-250153	
	Damper gasket	30 ft	1-00-00888	Y
	Damper Only		1-10-249107	
	Damper Shaft Retainer & Hardware	Set of 2	1-00-249145	Y
	Gasket, 1" Single Ply Tape	10 Ft	1-00-88100	Y
3	Fire dome Plus Combustion Package w/Gaskets		3-40-358110	Y
	Gasket, brick air	Pkg of 4	3-44-2500202-4	Y
	Gasket Set, Complete		3-44-358110	Y
4	Rear brick clips with hardware	Pkg of 2	1-00-249135	
5	Wooden handle for damper w/hardware	Pkg of 2	1-00-00249	Y
6	Damper Elbow, painted		3-50-00500S	Y
7	Damper Shaft bushing plates w/hardware	Inner & outer	1-00-856061	Y
8	Damper rod weldment		1-10-856011W	Y
9	Top Load Lift Arm w/Knob	Post 008840369	1-10-08722	Y
10	Lift Arm Wood Knob & Hdw	2 Sets	1-00-06228	
11	Left side panel, painted		2-00-856023B	Y
12	Inlet brick		3-40-358112	Y
13	Brick Air Plate	Set of 2	1-00-358118	Y
14	Side & rear firebrick	6 pc set	1-00-856077	Y
15	Ash grate		2-00-856013B	Y
16	Andiron with hardware and extensions		1-00-856010	Y
17	Front load door asy, painted with glass		1-10-06920A	
	Ball Spring Bracket		2-00-06714	
	Cast Door, Painted		4-00-06920P	
	Door gasket	30 ft	1-00-00888	Y
	Door latch, painted w/hdwr & handle		1-00-249119	Y
	Glass clips	Set of 4	2-00-05202-4	Y
	Glass gasket	15 ft	1-00-2312	Y
	Glass only		3-40-06932	Y
	Latch plate, roller & hardware		1-00-06903	

Additional service parts on following page

IMPORTANT: THIS IS DATED INFORMATION. Parts must be ordered from a dealer or distributor. **Hearth and Home Technologies does not sell directly to consumers.** Provide model number and serial number when requesting service parts from your dealer or distributor.



**Stocked
at Depot**

ITEM	DESCRIPTION	COMMENTS	PART NUMBER	
18	Ash door asy, painted with handle		1-10-856005A	
	Ash door latch only		3-00-249149	
	Ash door gasket	5 ft	1-00-10000	Y
	Ash door hinge with hardware		1-00-856020	
	Ash door roller with hardware		1-00-06902	
	Ash Door Wood Handle	Pkg of 3	3-40-08746-3	
19	Air slide rod bracket with hardware		1-00-856008	Y
20	Air control weldment		1-10-856004W	Y
21	Air slide		1-10-856003W	Y
22	Ash pan		1-10-856006A	Y
23	Combustion shoe brick		3-40-00100	Y
	Shoe brick gasket		3-44-06951	Y
24	Side brick insulation	Qty 2 req	3-40-856086	Y
25	Right side panel, painted		2-00-856024B	Y
26	Heat shield mounting plate, painted		2-00-856026B	
27	Rear heat shield, painted with hardware		1-00-856025	Y
	Blower Blockoff		1-00-856019	
	Brick Retainers, Side	Set of 2	1-00-06945	Y
	Cast Weld on Door Hinge	Qty 2 req	3-00-773813	
	Combustion Package Cap		2-00-358150B	Y
	Distribution Blower		7000-537	
	Power Cord		3-20-06652	Y
	Snap Disc Control		3-20-408412	Y
	Touch up Paint	Pre 008840396	3-42-1990	
		Post 008840396	3-42-19905	
	Ashlip Trim	Brushed Stainless	3-43-4722386-7	
	Door Trim	Brushed Stainless	3-43-856015-7	
	Tile Trim	Brushed Stainless	3-43-06729-7	
	Spring Clips (Required for installation of Tile Frame)	Pkg of 20	3-31-232547-20	

Additional service parts on following page

